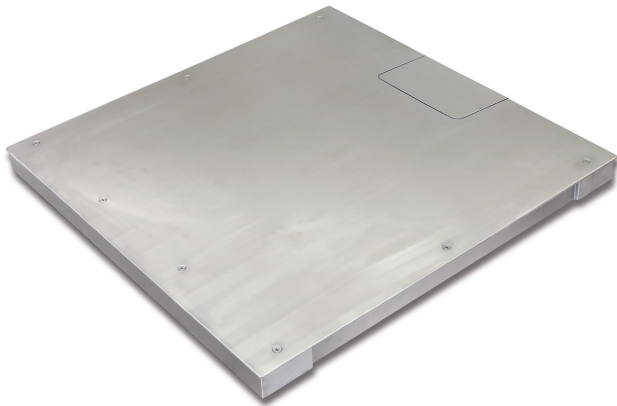


# KERN KFP 1500V40SM

# KERN

Weighing bridge entirely made of stainless steel, extremely resistant to bending because of its high material thickness



## Functions

IP protection - load cell	IP67
IP protection - platform	IP67 (junction box)

## Packing & Shipping

Readability force [d] (N)	2 d
Dimensions packaging (W×D×H)	1050×1050×260 mm
Net weight	95 kg
Shipping method	Freight
Net weight approx.	95 kg
Gross weight approx.	105 kg
Shipping weight	105 kg

## Services (optional)

Article number for conformity assessment	965-230
Article number for DAkkS calibration	963-130

## Pictograms

### STANDARD



### FACTORY



## Category

Brand	KERN
Product category	Component
Product group	Weighing bridge
Product family	KFP-V40-IP67

## Measuring System

Weighing capacity [Max]	1500 kg
Readability [d]	500 g
Minimum weight [Min]	10 kg
Loadcell type	ZEMIC BM8H 1 ton
Load cell connection	6-wire

## Approval

Verification scale interval [e]	500 g
Conformity assessment possible ex works	✓

## Construction

Dimensions weighing platform (W×D×H)	1000×1000×85 mm
Material weighing plate	stainless steel
Material platform	Stainless steel
Dimensions weighing surface (W×D)	1000×1000 mm
Cable length	5 m
Allowed cable length display device [Max]	20 m
Material load cell(s)	aluminium
Load cells - number	4
Levelling feet adjustable	✓